

Spencers Road

Maidenhead • Berkshire • SL6 6LJ

Guide Price: £575,000



coopers
est 1986

Spencers Road

Maidenhead • Berkshire • SL6 6LJ

A charming three bedroom, semi detached corner property.

A character home on Spencers Road, offering outstanding potential for those looking to remodel and create a personalised modern space, with neighbouring properties having already undertaken loft conversions, this home presents a similar opportunity, together with the option to extend the ground floor, subject to the usual planning consents. There is also potential to introduce a home office or other separate structure in the ample space towards the back area of the large corner plot garden. There is ample off-street parking - enough for 2/3 vehicles making use of the generous space at the end of the garden accessed via Belmont Vale. This property is ideal for buyers seeking a project with character, flexibility, and room to grow.

Three bedroom house

Semi detached

Character home

Sought after location

No onward chain

Potential to extend (S.T.P)

Requires certain modernisation

Spacious rooms throughout

Private rear garden

Off street parking

These particulars are intended as a guide and must not be relied upon as statements of fact. Your attention is drawn to the Important Notice on the last page.

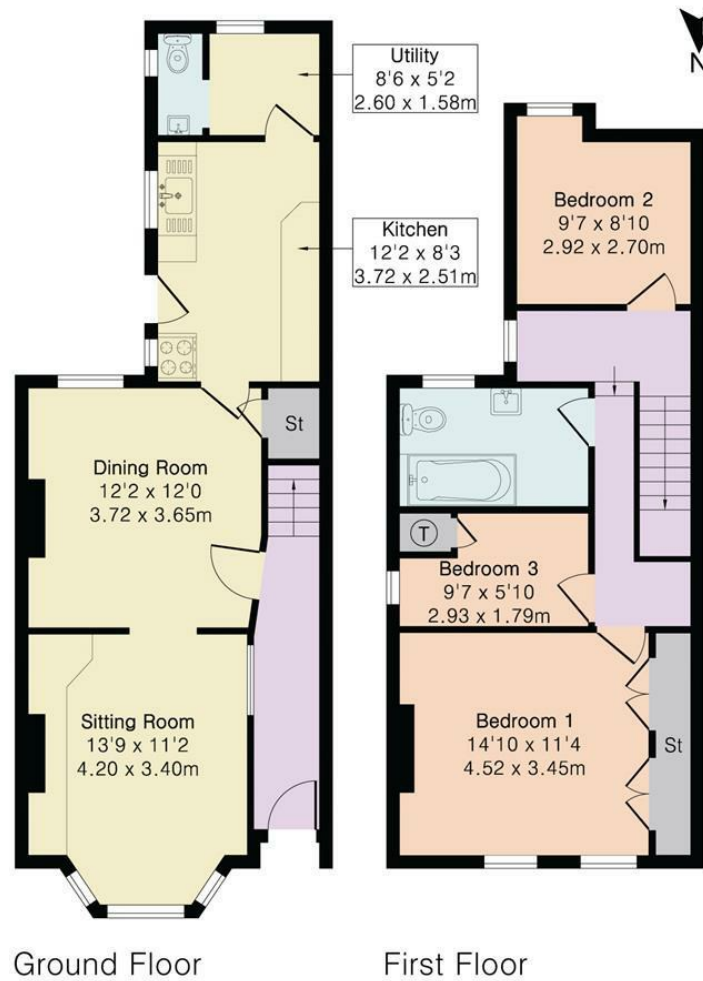




Approximate Gross Internal Area 981 sq ft - 91 sq m

Ground Floor Area 513 sq ft – 48 sq m

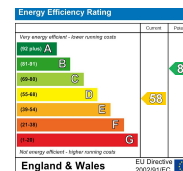
First Floor Area 468 sq ft – 43 sq m



coopers
est 1986

42 Queen Street, Maidenhead,
, SL6 1HZ
maidenhead@coopersresidential.co.uk

CoopersResidential.co.uk



Important Notice: These particulars, whilst believed to be accurate are set out as a general outline only for guidance and do not constitute any part of an offer or contract. Intending purchasers should not rely on them as statements or representation of fact, but must satisfy themselves by inspection or otherwise has the authority to make or give any representation or warranty in respect of the property.